



STATE OF CONNECTICUT

BOARD OF TRUSTEES
FOR THE STATE COLLEGES

P. O. BOX 2008

NEW BRITAIN, CONNECTICUT 06050

TEL. NEW BRITAIN: 203-229-1607

TEL. HARTFORD: 203-566-7373

RESOLUTION

concerning

ESTABLISHMENT OF THREE SCHOOLS
at
WESTERN CONNECTICUT STATE COLLEGE

December 3, 1976

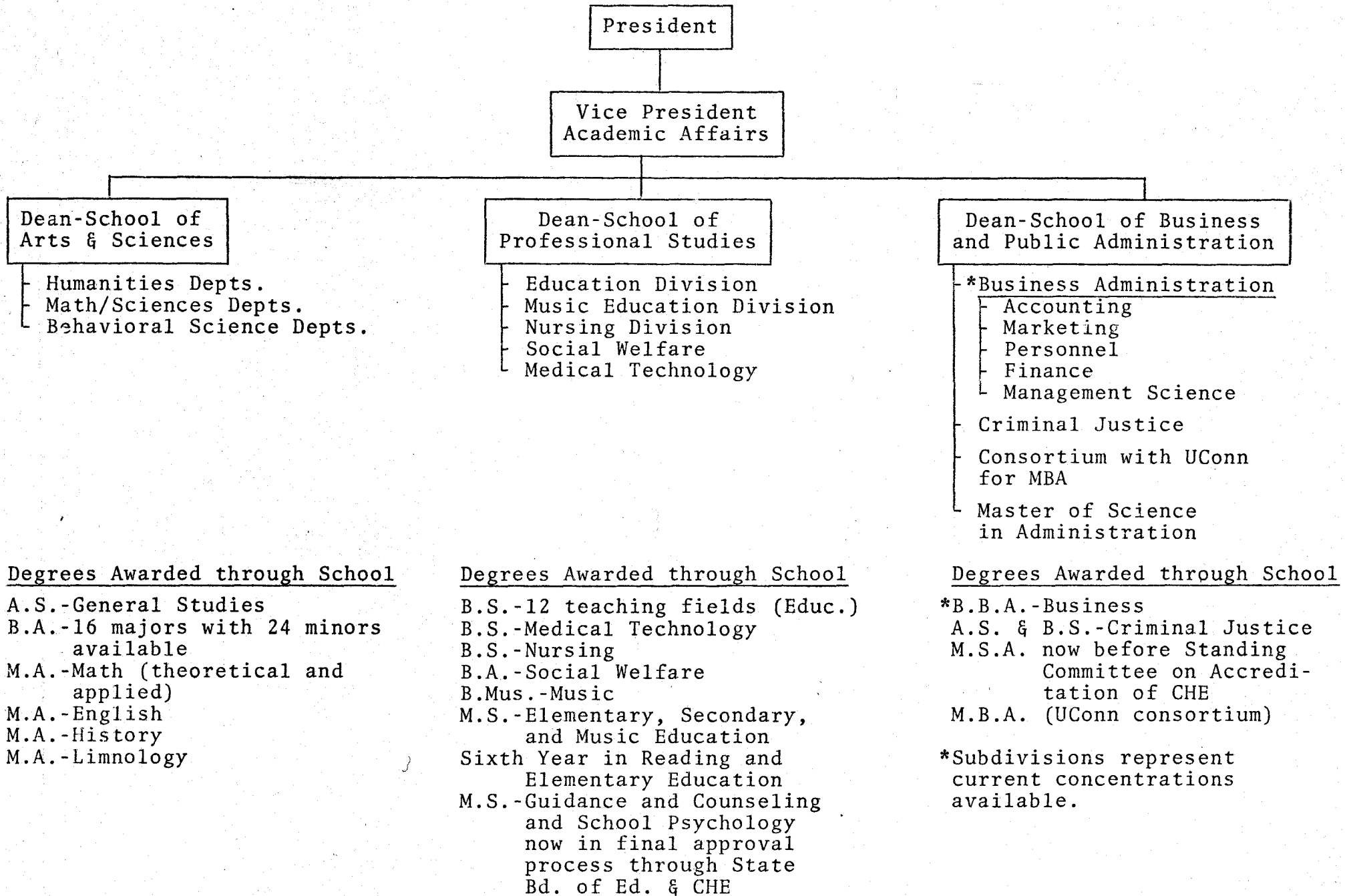
- WHEREAS, Western Connecticut State College has reached a stage in its development in which it can better serve its students and its community by reorganizing its academic structure into a School of Arts and Sciences, a School of Professional Studies, and a School of Business and Public Administration, and
- WHEREAS, Study of such reorganization shows it to be feasible both from the standpoint of administration and cost, therefore be it
- RESOLVED, That the academic structure at Western Connecticut State College be divided into the following units:
the School of Arts and Sciences,
the School of Professional Studies, and
the School of Business and Public Administration,
and be it
- RESOLVED, That each instructional department and each instructional division of the College shall be assigned to one of the Schools and that such assignment shall be made by the College President.

A Certified True Copy:

A handwritten signature in cursive script, reading 'James A. Frost', written over a horizontal line.

James A. Frost
Executive Secretary

PROPOSED ACADEMIC ADMINISTRATIVE STRUCTURE
AND REPORTING RELATIONSHIPS



SUMMARY OF OFFERINGS IN THE FIELDS OF BUSINESS ADMINISTRATION
AND CRIMINAL JUSTICE ON WESTERN CAMPUS, FALL 1976

UNDERGRADUATE

B.B.A.	29 evening classes	894 students	24 faculty members
B.B.A.	23 day classes	707 students	10 faculty members
C.J.	2 evening classes	77 students	2 faculty members
C.J.	7 day classes	269 students	3 faculty members

Overlap in day and evening course teaching assignments would reduce total number of faculty to 37 specific individuals teaching courses this semester. Growth curves show these figures to be in a consistent pattern and portend increases every semester for the foreseeable future. These figures omit completely enrollments in other required courses (e.g. economics, computer science) required of students in Business Administration.

GRADUATE

M.B.A. (Joint UConn/Wesconn)

10 classes	200 students	10 faculty members
------------	--------------	--------------------

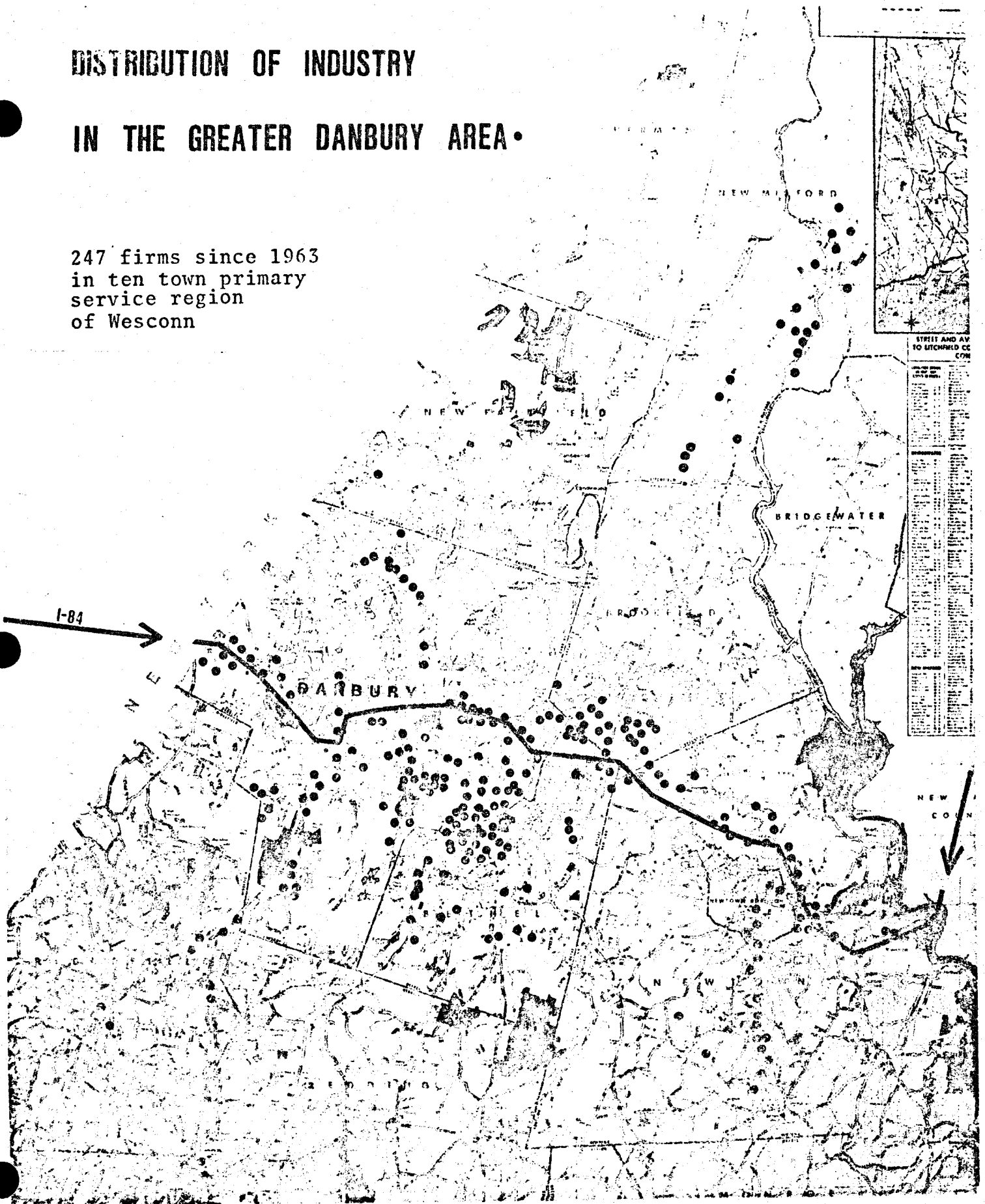
M.S.A. (scheduled for Fall 1977)

Current indicators point to enrollments in this program exceeding M.B.A. program.

<u>Totals</u>	<u>71 classes</u>	<u>6,441 student credit hours</u>	<u>49 faculty members</u>
---------------	-------------------	-----------------------------------	---------------------------

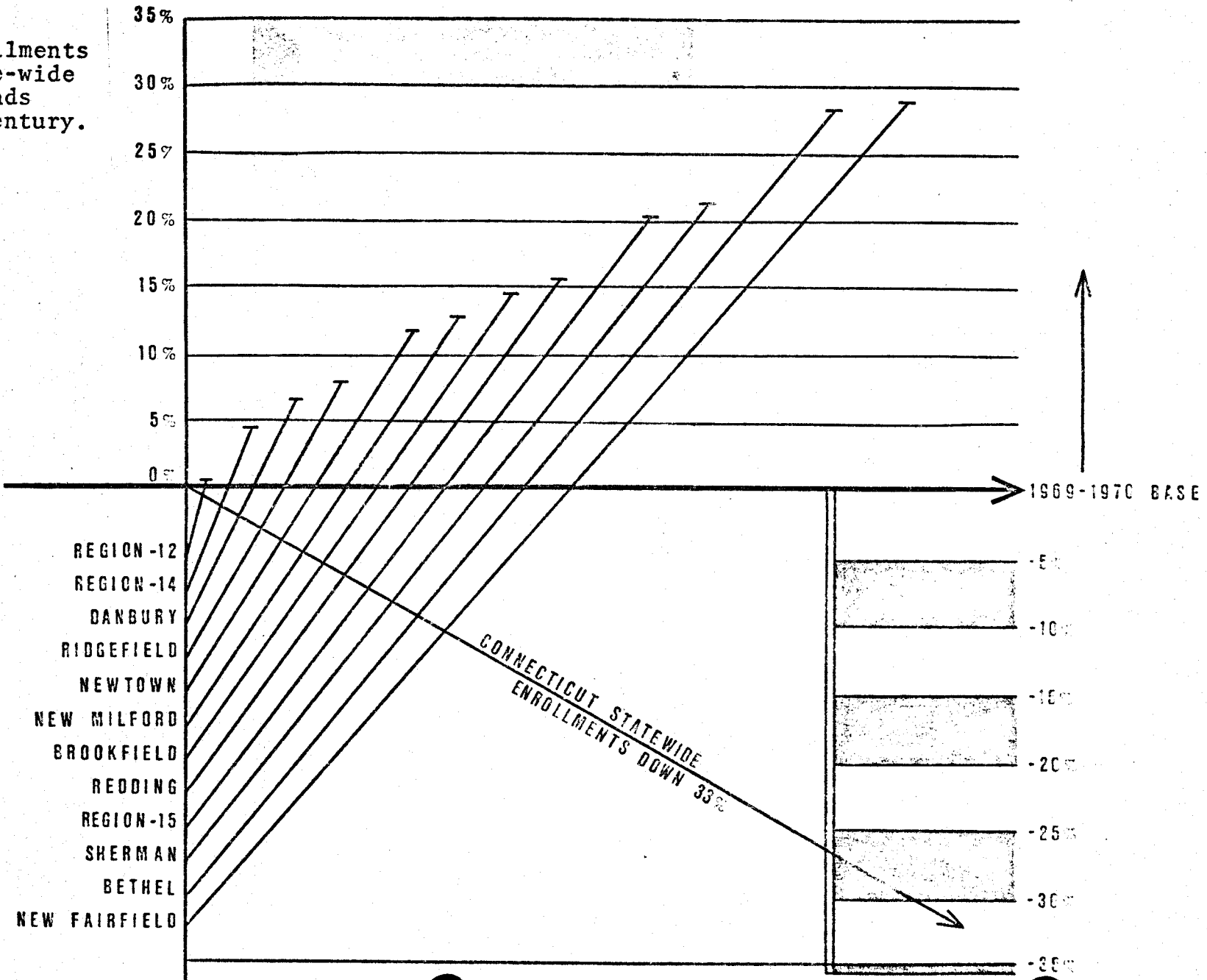
DISTRIBUTION OF INDUSTRY IN THE GREATER DANBURY AREA.

247 firms since 1963
in ten town primary
service region
of Wesconn



AREA GROWTH IN SCHOOL ENROLLMENT 1969-1975

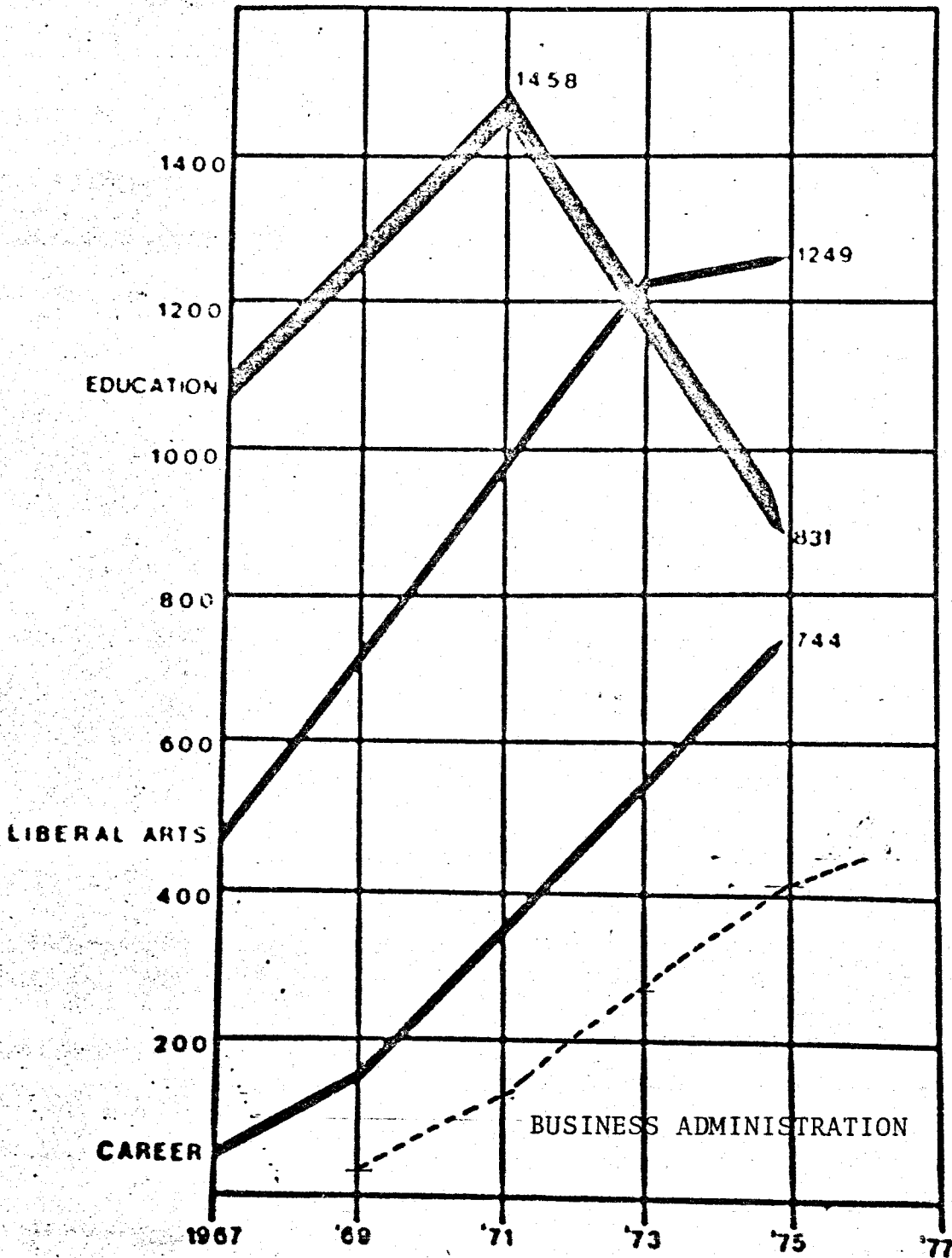
Area growth enrollments
contrary to state-wide
and national trends
well into 21st Century.



PROGRAM ENROLLMENT

1967 - 1975

FULL-TIME DAY PROGRAMS



ADMINISTRATIVE INDEX

Checking the 1976-77 budgeted administrative costs of Western Connecticut State College against the WICHE administrative index (8-9%) for academic administration and executive management places the Wesconn costs for these functions at 8.4% of the General Fund Current Expenditures.

General Fund Budget

Total Current Expenses	\$4,793,368
Executive Management	<u>274,259</u>
Academic Administration	<u>132,248</u>
	406,507 = 8.4%

Total Budget (General Fund, Auxiliary Services, Educa- tional Extension)

Total Current Expenses	8,423,861
Executive Management	<u>274,259</u>
Academic Administration	<u>315,576</u>
	589,835 = 7.0%